

Point of Care Risk Assessment (PCRA)

July 2018

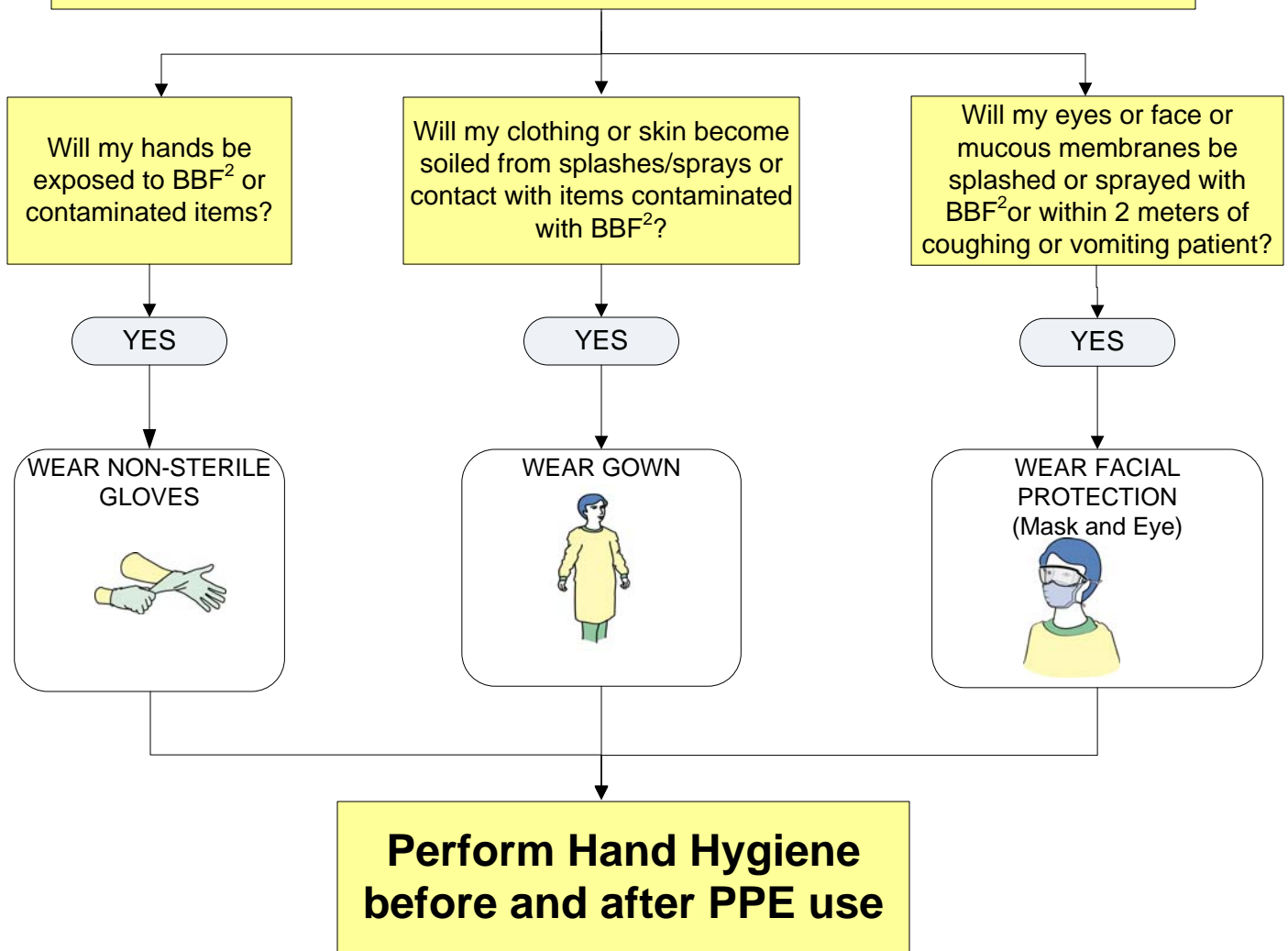
ASSESS the TASK, the PATIENT and the ENVIRONMENT¹
Prior to EACH PATIENT INTERACTION

Performing a **PCRA** is the first step in routine practices.

Routine Practices are to be used with **all patients** for **all care** and **all interactions**.

This will help you decide what, if any, **PPE** you need to wear to protect yourself and to prevent the spread of germs.

A **PCRA** is to be performed prior to contact with every patient, every time even if the patient has been placed on **Additional Precautions** as more PPE may be required.



Refer to Donning and Doffing posters for correct order for putting on and removing PPE & hand hygiene steps

Notes

¹**Environment** = any area within 2 meters of the patient as well as their belongings and bathroom or the immediate space around a patient that may be touched by the patient AND may also be touched by the healthcare provider when providing care or performing tasks

²**BBF** = Blood and Body Fluids (includes: urine, feces, wound drainage, saliva, vomit, CSF, sputum, nasal secretions, semen, vaginal secretions)

Adapted from Choosing Personal Protective Equipment (PPE) 2014